

Ars Memorativa

LLUÍS SOLER
ABEL FOLK
MARIA DONOSO
MIKEL TAMARIT

Costumes IDOIA BENEÏT Make up SANDRA RAMÍREZ Sound XAVI SAUCEDO
Art director CARMINE PALMENTIERI Post edition AITOR GUINEA Cinematography SERGI LAFUENTE
Production manager MARCO EMILIANI Director assistant ENRIC SAURÍ
Writer, director and executive producer PAU PÉREZ USLÉ

DANCLINGKID
FILMPRODUCTION

 Generalitat
de Catalunya
Institut Català
de les Empreses Culturals

ABCDEFGHIJKLM
NOPQRSTUVWXYZ
ABCDEFGHIJKLM
NOPQRSTUVWXYZ
ABCDEFGHIJKLM
NOPQRSTUVWXYZ
ABCDEFGHIJKLM
NOPQRSTUVWXYZ
abcdefghijklm
nopqrstuvwxyz
abcdefghijklm
nopqrstuvwxyz
abcdefghijklm
nopqrstuvwxyz
abcdefghijklm
nopqrstuvwxyz

ABCDEFGHIJKLM
NOPQRSTUVWXYZ
ABCDEFGHIJKLM
NOPQRSTUVWXYZ
ABCDEFGHIJKLM
NOPQRSTUVWXYZ
ABCDEFGHIJKLM
NOPQRSTUVWXYZ
abcdefghijklm
nopqrstuvwxyz
abcdefghijklm
nopqrstuvwxyz
abcdefghijklm
nopqrstuvwxyz
abcdefghijklm
nopqrstuvwxyz

A
R S
M
O E M
A R
T
i
v
a

LOG LINE

Bernal Planes, a university professor specialising in Ramon Llull, starts suffering the first symptoms of Alzheimer's disease.

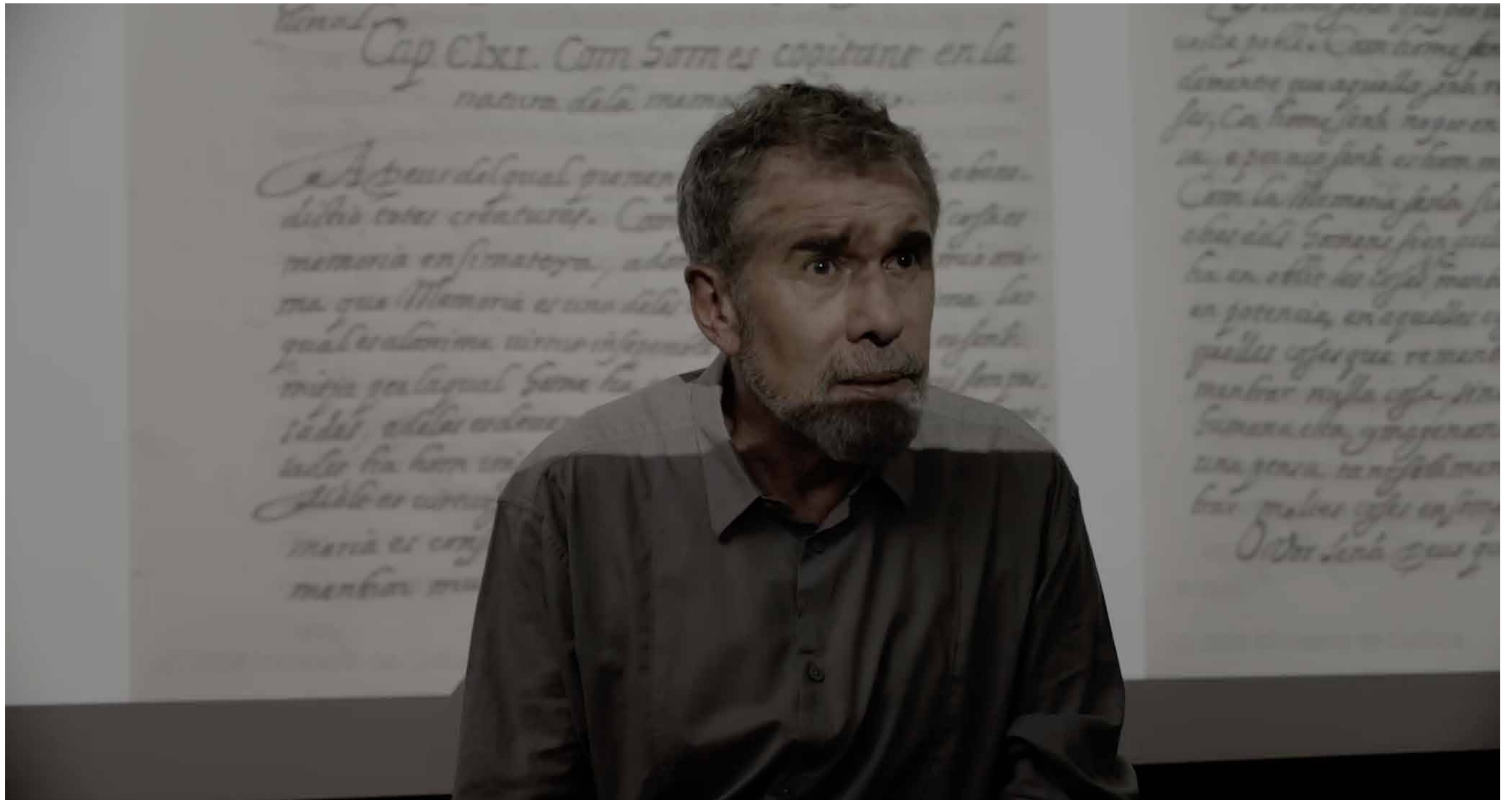
SINOPSI

Professor Bernat Planes teaches Medieval Literature at the university. He specialises in the work of Ramon Llull, with great vocation and concern about the transfer of knowledge. When he starts noticing the first symptoms of Alzheimer's disease, finds moral support from his editor friend. He also finds continuity for his work in a former student currently working on her PhD thesis.

MEMORY AND KNOWLEDGE TRANSFER

It seems obvious that memory has been an important/essential tool in transferring knowledge. It is not a coincidence that in the Ancient Greece, Mnemosyne (Memory) was the mother of muses. Without Aedes' memory, it would not have been possible to transmit epic poems such the Iliad and the Odyssey. Although the relationship between the two has not been immutable.

The advent of scripture started to modify that relation between the transfer of knowledge and memory, even more with the invention of printing. At the present time it seems memory has been replaced by data bases, useful and easily accessible by most of the population. Nevertheless, for a medieval literature professor, individual memory as a tool, still reminds very important. Therefore, it turns in a special severity and anxiety generated by a disease that affects directly that memory.



THE CHARACTERS

Professor Bernat Planes is the main character; He loves his job and is a very committed man to his teaching duty. He gets pleasure in transferring his knowledge to his students, therefore, when the first symptoms of the disease appear, he worries not just for his own lose of memory but for the continuity of his duty as a professor and researcher.



THE CHARACTERS

Professor Planes' PhD student, Helena, working on her thesis, will be the generational counterpart that will carry on with professor's research and teaching duty.



THE CHARACTERS

The editor, the professor's wealthy friend, is the rational voice, reflexive and reassuring that acts as moral support for him.



RAMON LLULL

Choosing Ramon Llull as the professor's study context, the theme to his research, the lessons and Helena's thesis theme, has not been coincidental. The fact that Llull is an author prior to the invention of the printer, confers in him a direct link with memory. Similarly, memory was an essential subject in his work, achieving an important role as a tool of metaphysic knowledge.

Finally, we need to remember the importance that knowledge transfer had throughout his life, which he achieved with the use of vulgar language in facilitating access of his writings to a wider audience. His project of creating monasteries for teaching languages also helped to facilitate this task.



LAS ILLUSTRATIONS

A few medieval illustrations have a relevant importance in the plot, not just as an aesthetical function, but also as a narrative. Two of them belong to Tomàs le Myésier's Breviculum, another to Ramon Llull's The Tree of Science.

The Breviculum is an abridged version of the Electorum, a compilation of Llull's writings by Le Myésier, which is preserved at the Landesbibliothek of Karlsruhe, in Germany.

Le Myésier included twelve miniature sheets where, in a visual way, Ramon Llull's life is narrated. The two Breviculum miniature sheets that have been used are the following:

Sheet 11 (sequence 1) is the representation of moment in which Llull hands the Breviculum to Le Myésier. The important act of knowledge transfer is expressed in a very visual way, very similar to today's comic books.

Sheet 5 (sequence 9) where Llull's ARS' principles are represented. It is the illustration that the professor uses to explain Llull's ARS and where memory appears as one of the virtues.

The third illustration, Arbor Moralis, is from Llull's book The Tree of Science and represents in a schematic way the principles of morality. The book has sixteen trees in which Ramon Llull tries to compile his knowledge in an encyclopaedic and illustrative way.



LOCATIONS

The locations linked to the professor, his work related to memory, are spaces with a historical character. The Biblioteca de Catalunya architecture adds an almost mystic feeling to one of his work places. The rest of locations, the class room and his office, part of the old building at Universitat de Barcelona, also offer an old atmosphere.

His friend's apartment has a more modern aspect, a design more concordant to the character.

The spaces directly related to the disease and with the loss of memory, such as the scan room and the long corridor, both from the Hospital Clinic de Barcelona, have an aseptic cold feeling that has been achieved throughout the use of white.

CASTING

Lluís Soler
Abel Folk
Maria Donoso
Mikel Tamarit

THE DIRECTOR

Graduated with a degree in Industrial Engineering, Pau Pérez (Sabadell, Barcelona, 1971) studied Cinematographic Direction at CECC (Barcelona). ARS Menorativa is his fourth short film. Has collaborated in various films as scriptwriter and producer.

Short films as director:

-La mujer del pescador. 2004
-Baga, Biga, Higa... 2005
-Conte de llops. 2014
-ARS Memorativa. 2018

THE CREW

Writer, director and executive producer	Pau Pérez
1st Director assistant	Enric Saurí
2nd Director assistant	Alberto Acero
Script	Anaïs Artells
Production manager	Marco Emiliani
1st Production assistant	Marina Royo
2nd Production assistants	Sílvia Mir, Nil Santané
Cinematography	Sergi Lafuente
1st Camera assistants	Antonio Urquijo, Víctor Català
2nd Camera assistant	Federico Pérez
Steadicam operator	Alberto Ojeda
Gaffer	Isa Ebens
Lighting	Alan Douglas Neil Murphy
Still photographer	Sílvia Ragel
Sound	Xavi Saucedo
Sound effects	Edgar Vidal
Art director	Carmine Palmentieri
Atrezzo	Alexandra Berruezo
Post edition	Aitor Guinea
Costumes	Idoia Beneit
Make up	Sandra Ramírez
Credits designer	Joan Boadella

TECHNICAL SPECIFICATIONS

Original title: Ars Memorativa
Original Language: Catalan
Subtitles: Spanish and english
Production year: 2018
Running time: 00:21:15 (21' 15")
Aspect ratio: 16/9
Exhibition format: DCP

